

# Agenda

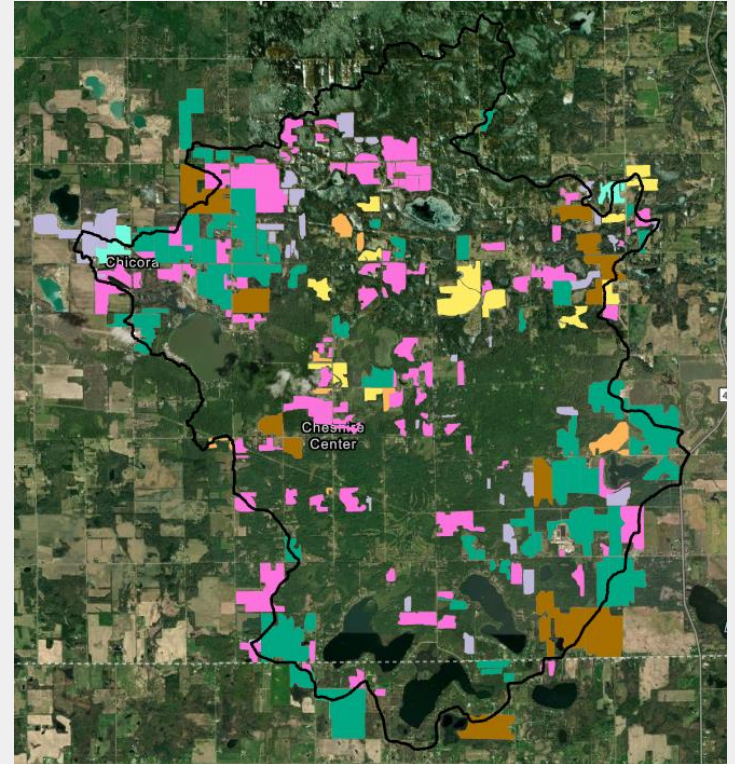
- Project progress
- Data update
  - Agriculture inventory
  - Water quality results
- Watershed goal setting
- Open discussion

# Project Progress

- **Agriculture inventory**
  - Completed: tillage and residue surveys
  - Next: Animal feeding operation survey, data analysis
- **Water quality inventory**
  - Completed: June and July tributary samples, 2 of 3 wet weather samples, summer lake samples
  - Next: continue tributary samples, *E. coli* and optical brightener samples, septic “inventory”
- **Watershed management plan**
  - Completed: draft background chapters and plan outline
  - Next: continue adding to background chapters

# Agriculture Inventory

Spring Residue	Fields	Acreage	Percentage
Planted no-till	15	290	6%
Greater than 30%	3	70	1.5%
Less than 30%	13	664	14%
No residue	59	1,783	38.5%
N/A	105	1,345	29%
Not Planted	10	106	2%
Skipped	36	368	8%
Total	241	4,629	

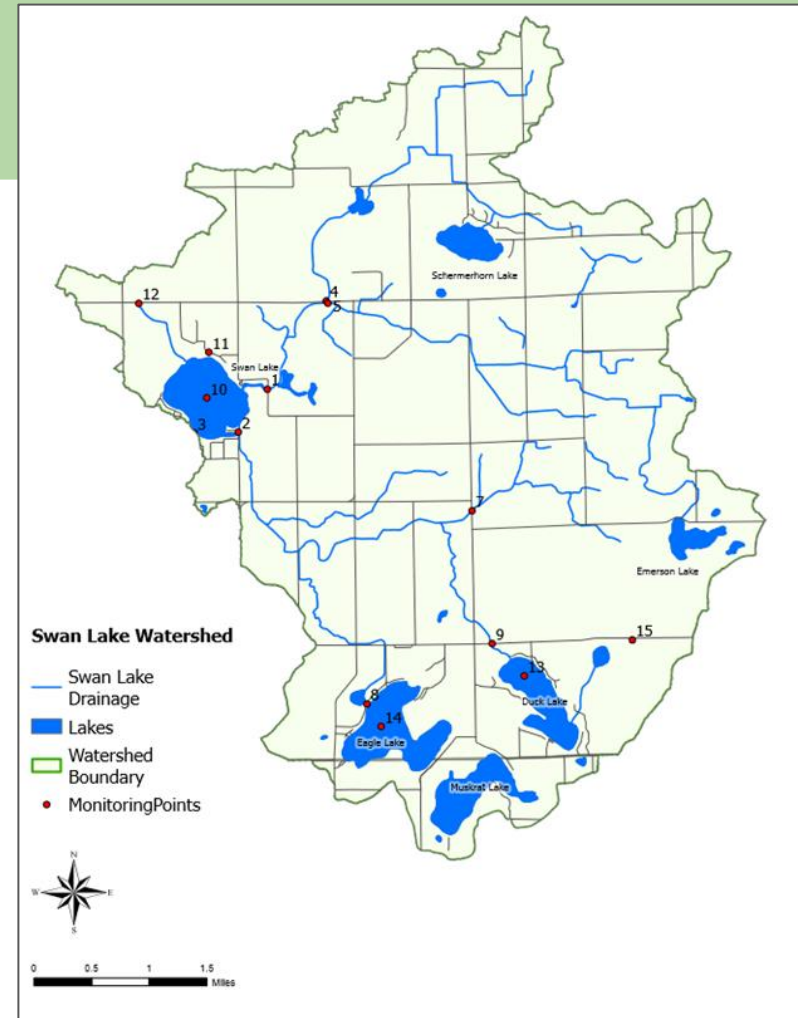
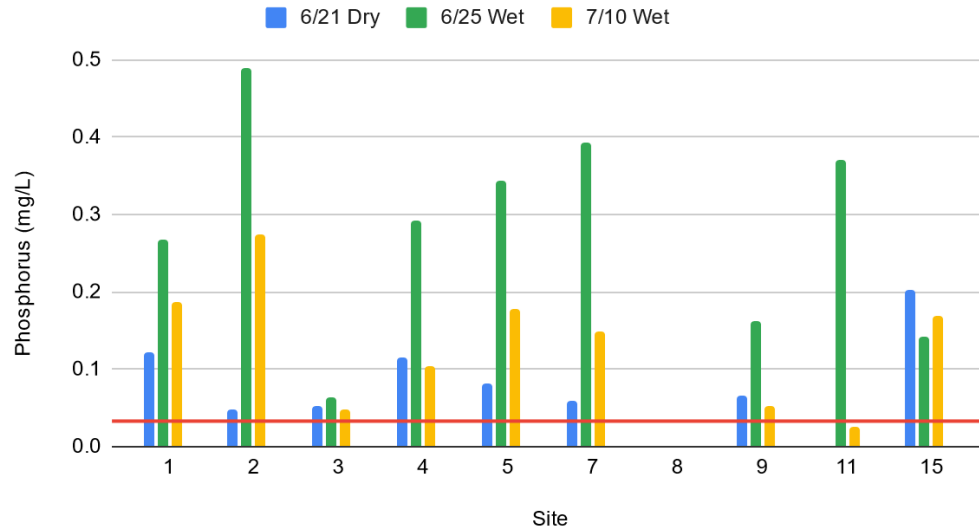


# Water Quality Monitoring



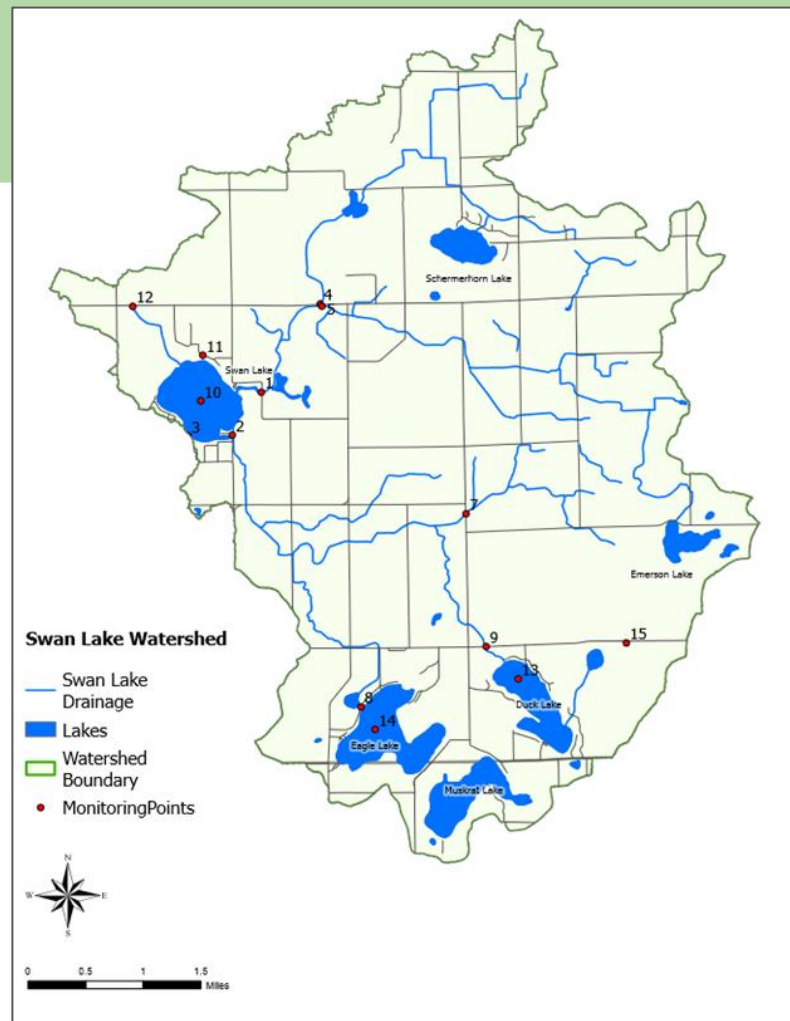
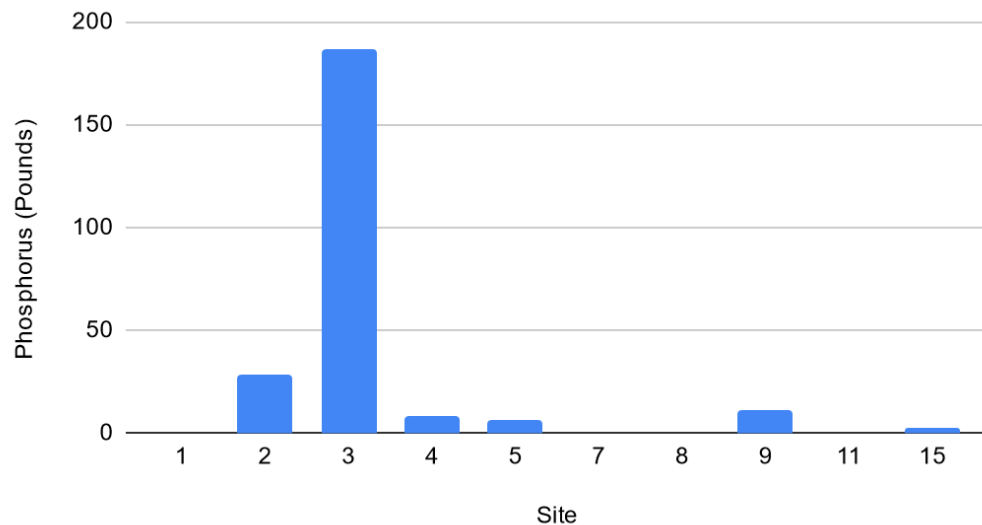
# Water Quality

## Phosphorus Levels in the Swan Lake Watershed



# Water Quality

## Total June Phosphorus Per Site



# Designated Uses

- Cold Water Fishery
- Warm Water Fishery
- Other Indigenous Aquatic Life and Wildlife
- Partial Body Contact Recreation
- Total Body Contact Recreation
- Fish Consumption
- Navigation
- Agriculture
- Industrial Water Supply
- Public Water Supply

See EGLE's 2024 Integrated Report for Assessment Details

# Designated Use Impairments

## Listed Impairments

<b>Location</b>	<b>Designated Use</b>	<b>Cause</b>
Swan Lake	Other indigenous aquatic life and wildlife	Eutrophication, nutrients

## Suspected Impairments

<b>Location</b>	<b>Designated Use</b>	<b>Cause</b>
Duck Lake	Other indigenous aquatic life and wildlife	Eutrophication, nutrients
Tributaries upstream of Swan Creek Pond	Warm water fishery	High temperature, low dissolved oxygen



# Desired Uses

## Examples:

- Groundwater for residential use
- Recreational trails
- Preservation of prime agricultural land
- Protection of unique terrestrial habitats
- Rural character

# Watershed Goals

## Examples:

- Reduce nonpoint source sediment, nutrient, and pathogen loading from agricultural fields by stabilizing sediment and minimizing runoff volume and pollutant load.
- Minimize pathogen and nutrient pollution from human waste.
- Reduce nonpoint source pollution caused by runoff from urbanized areas.
- Develop a trail system for Cheshire and Trowbridge Townships.
- Preserve wildlife habitat along riparian corridors.

# Stakeholder Concerns Received to Date

- Leaking pump and haul septic holding tanks
- Runoff into Duck Lake over farm field and road at MacDougall St
- Runoff into Duck Lake from 36th St. drain at Baseline Rd
- Runoff into Burke Drain/Duck Lake from large livestock operation at 102nd
- Field runoff discharged through culvert under E Duck Lake Dr.
- Field runoff discharged into Swan Lake through culvert under Lakeview Dr.

# Upcoming

- Next meeting: Thursday, October 24 at 3pm
- Michigan Sea Grant 'Algae 101' Webinar **tonight 6-7:30**
  - Under Calendar section on the Michigan Sea Grant website, register online
- Michigan Inland Lakes Convention in Grand Rapids, October 2-4
  - Hosted by the Michigan Inland Lakes Partnership
- November lake data collection on Swan, Eagle, and Duck Lakes

# Questions and Open Discussion

Brian Talsma

269-941-6108

[brian.talsma@macd.org](mailto:brian.talsma@macd.org)

Nathan Hilbrands

269-941-6162

[nathan.hilbrands@macd.org](mailto:nathan.hilbrands@macd.org)



**ALLEGAN  
CONSERVATION  
DISTRICT**

269-941-6165

[allegan.admin@macd.org](mailto:allegan.admin@macd.org)

[allegancd.org](http://allegancd.org)