

# Gun River Watershed Management Plan Update

September 2021 Steering Committee Meeting



ALLEGAN  
CONSERVATION  
DISTRICT

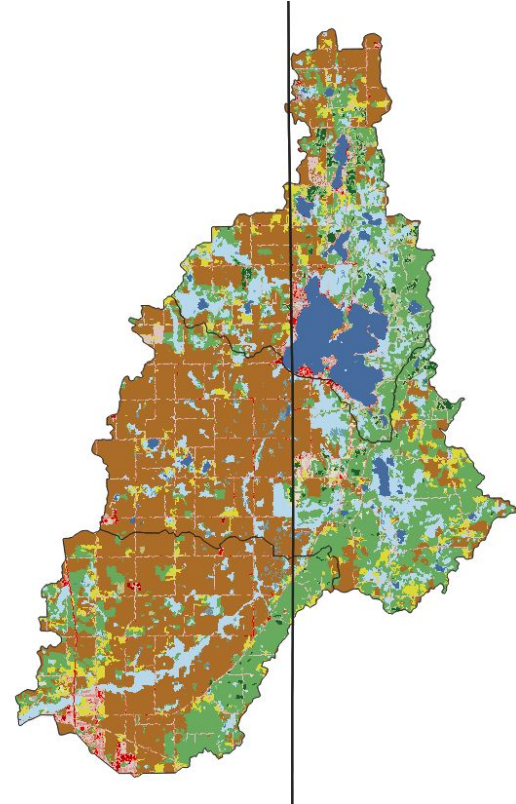
# Steering Committee Tasks

- Suggestions and feedback
- Identify topics that should be discussed within the WMP
- Identify areas of concern that should be inventoried or further explored
- Review WMP updates for completeness and accuracy

# Watershed Overview - Land Use Characteristics

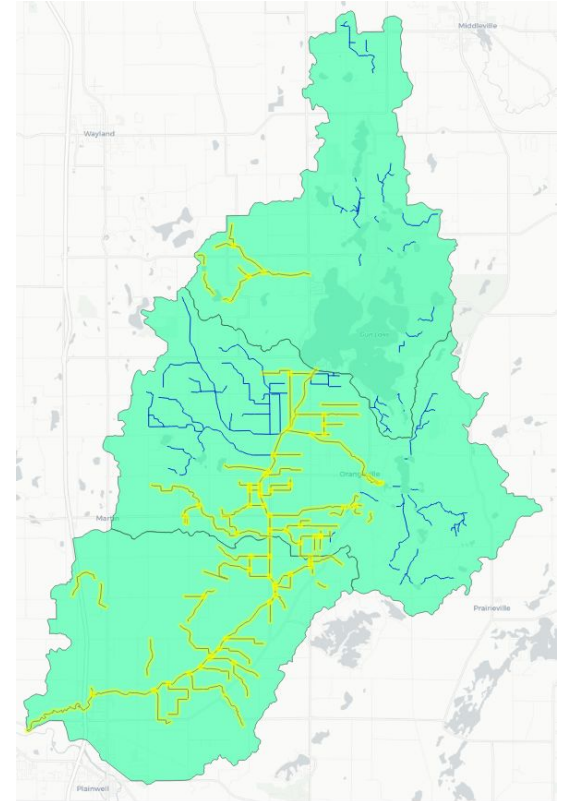
From 2016 National Land Cover Database

- 47% Agriculture
  - 42% Row crops
- 39% Natural lands
  - 25% Forests
  - 13% Wetlands
- 8% Developed



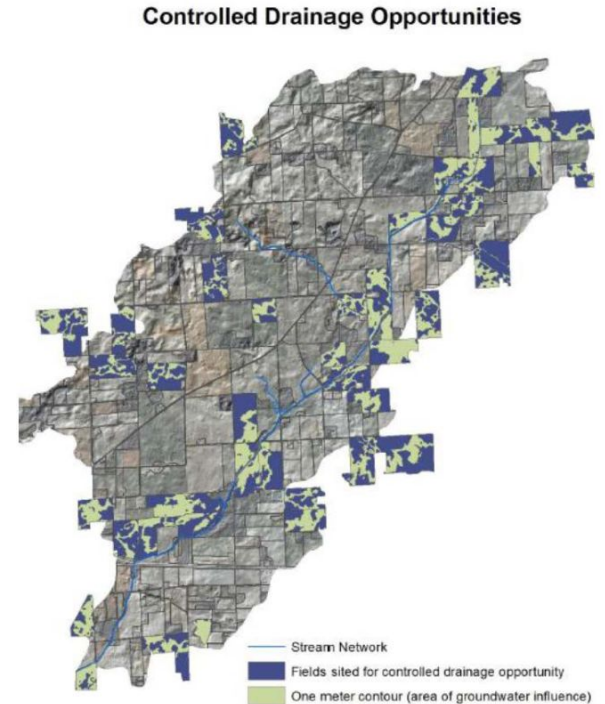
# Watershed Overview - Designated Use Impairments

- Other indigenous aquatic life due to flow regime and substrate alteration
  - Gun Lake to Orangeville Creek confluence
- Partial and total body contact recreation
  - Statewide *E.coli* TMDL applied to entire watershed
- Fish consumption due to mercury and PCBs



# Agricultural Inventory - Desktop Analysis

- Digitization of field boundaries and surface flow patterns
- Identification of sites of concern from aerial photos
- GIS analysis using Agricultural Conservation Planning Framework
  - Uses soils, land use, hydrology, and other data sets to identify opportunities for conservation practices



# Agricultural Inventory - Windshield Survey

- Fall tillage survey
  - After most fall tillage and before spring tillage (November - March)
  - Identify where fall tillage is occurring
- Spring residue survey
  - Between planting and canopy closure (May - June)
  - Identify fields with little residue cover
- Livestock operations
  - Flexible timing
  - Identify number and type of animals, any environmental concerns

# Stream Inventory

- Visual survey of waterbodies to identify concerns related to
  - Stream crossings
  - Road runoff
  - Gully erosion
  - Riparian buffers
  - Streambank erosion
  - Livestock access
  - Agricultural runoff
  - Tile outlets
- Need to identify priority reaches

# Other Topics to Update/Explore

Fisheries Surveys

Fish Stocking Records

Natural Features Inventory

Invasive Species

Septic Concerns

Priority Areas for Preservation

Water Quality

Others?